

PLATELET RICH PLASMA (PRP) INJECTION TREATMENT



Overview

This non-surgical procedure relieves chronic pain with an injection of the patient's own blood platelets. The concentrated platelets promote the natural healing of damaged joints and soft tissues of the spine.

Causes of Pain

Problems are often associated with the damage or degeneration of tendons, ligaments and joint capsules. The limited blood supply and poor healing properties of these soft tissues make treatment necessary after injury.

Collecting the Platelets

The PRP process begins when a sample of blood is taken from the patient and is separated into its components - platelets and white blood cells, plasma, and red blood cells. A portion of the plasma is removed. The patient's concentrated platelets are mixed with the remaining plasma to form a concentrated solution. A syringe is filled with the solution.

Preparation

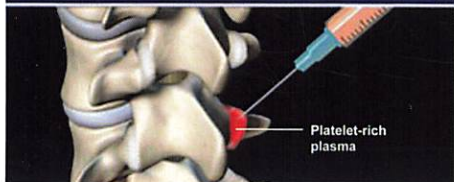
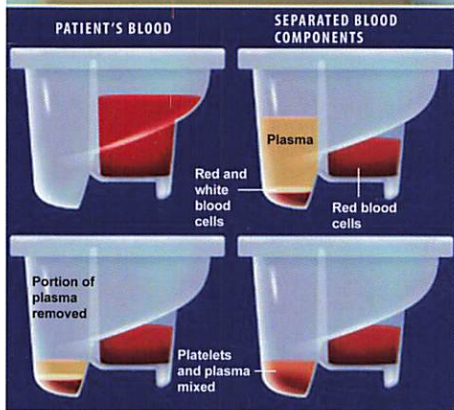
The area is cleansed and sterilized. A local anesthetic may be used to numb the injection site.

Administering the Injection

The needle is directed and guided into the target area. The platelet rich plasma is injected into and around the damaged tissues. The physician may need to administer additional injections to other injured structures. This will help to ensure complete tissue healing and maximize joint stability.

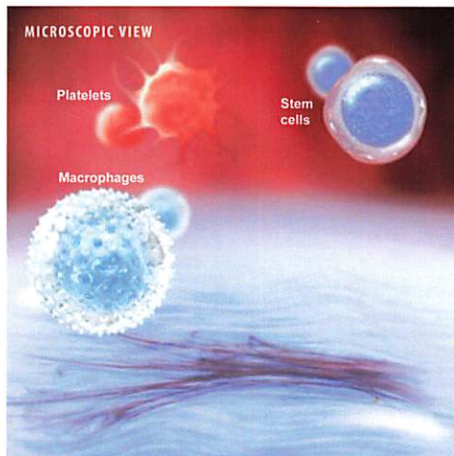
The Body Reacts

The concentrated platelets release many growth factors that promote a natural immune response, mobilizing stem cells to the injured tissues. Macrophages - specialized white blood cells - rush in to remove damaged cells and prepare the tissue for healing.



(continued on reverse side)

PLATELET RICH PLASMA (PRP) INJECTION TREATMENT, *continued*



Healing Begins

Stem cells and other cells multiply, repair and rebuild the damaged tissue. This accelerated healing response reduces pain, promotes increased strength, and improves joint function.

Follow-up

The entire PRP treatment process takes about an hour - the patient will be able to go home the same day. Full recovery from the injection usually occurs within one week of the procedure. Many patients require three to four treatments before the injured tissues are completely healed and they return to a normal active lifestyle.

